

LUXURY FEATURES

All homes include the following:

- Air conditioning unit
- Garage with inside access
- Laminate flooring in living room / dining room
- Pressure treated wood deck
- 3 stainless steel appliances (Fridge, stove and dishwasher)
- Washing machine and dryer
- Paved driveway
- FREE maintenance (common area snow removal and grass cutting.)*

LEASING OFFICE

Please visit our Upper Kains model home / leasing office at 1846 Shore Rd., London

LEASING OFFICE HOURS

Tues/Thurs: 2pm-7pm

Saturday: 10am-5pm

The fine print.

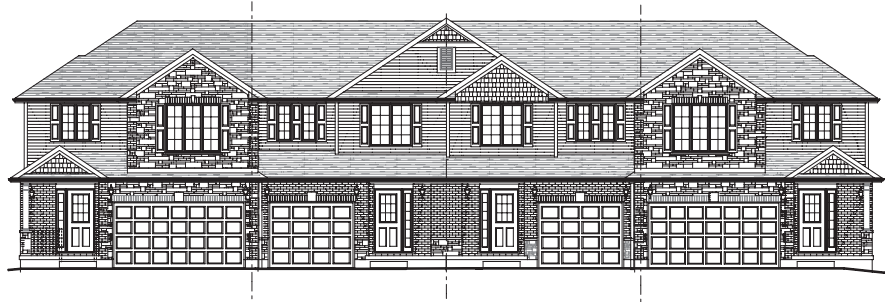
* Includes common area snow removal and grass cutting. Each tenant is responsible for their own driveway, front porch and steps snow removal.

Some listed features may not be completed at time of occupancy due to site conditions.

Utilities are not included in rent and are the responsibility of the tenant.

Square footage is approximate and may vary on site.

Price and specifications are subject to change without notice. Prices include HST, E&OE.
 Printed March 26, 2018 3:04 PM



3 BEDROOM

Inner suite
 1,452 sq.ft.
 2.5 bathrooms
 1 car garage

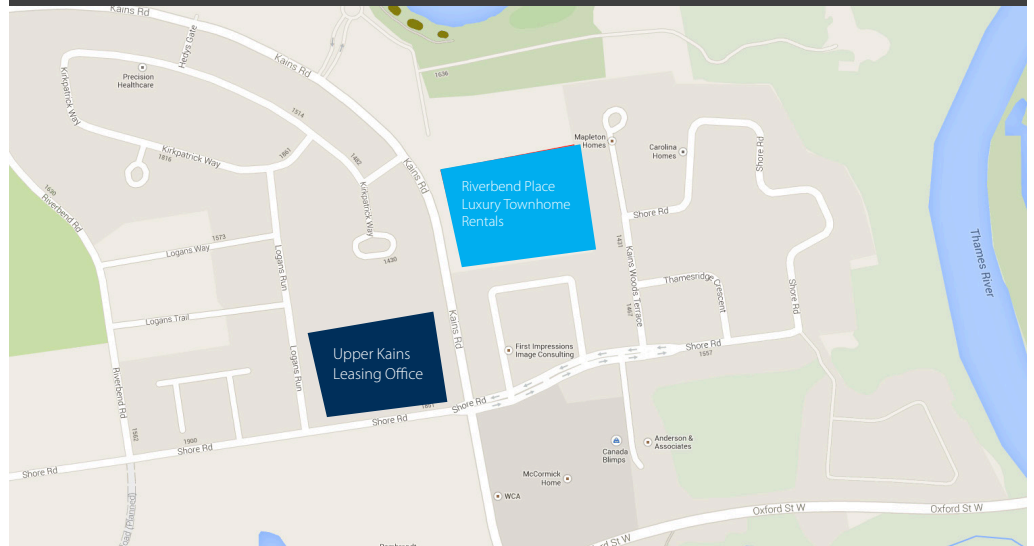
FROM
\$1,500 / month + utilities

4 BEDROOM

End suite
 1,746 sq.ft.
 2.5 bathrooms
 2 car garage

FROM
\$1,630 / month + utilities

LOCATION MAP: 2050 Kains Rd.



Inquire for rental information:
(519) 521-8880
www.joylife.ca